



CEODEUX
FIRETEC

**Manual, pneumatic
operated valves for
fixed installations,
CO₂ and inert gases**

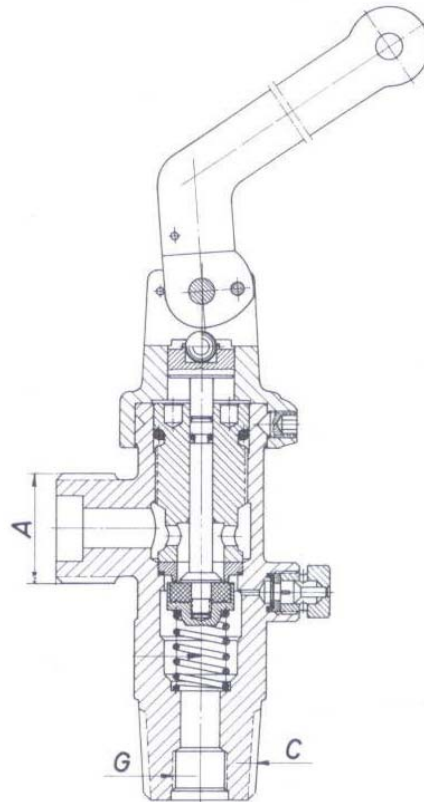


Series

B0160 - B0162

STANDARD SPECIFICATION

Working pressure p max.	250 bar
Temperature range	- 20°C + 60°C
Seat orifice size	12 mm
Material	
Valve body	brass
Inlet connection	C = 25E EN 629-1
Outlet connection	A = W 21,8 x 1/14" DIN 477
Dip tube connection	G = 3/8"



ORDERING

When ordering please specify:

- Series number or series attribution
- Burst disc pressure "p"

TYPE ATTRIBUTION

Type	Connections		
	inlet	outlet	G
B0160	W 33,55 x 1/11"	G 1"	G 3/8"
B0161	25E	W21,8 x 1/14"	G 3/8"
B0162	W 36,2 x 1/14"	G 1"	G 3/8"