



**CEODEUX**  
FIRETEC

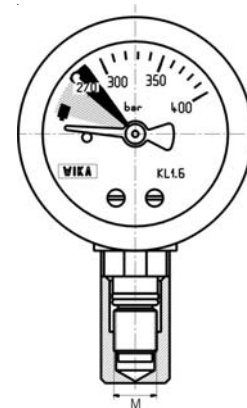
**Assembly pressure gauge with integrated pressure switch, 50 mm**



**B**  
Series  
**02972**

**STANDARD SPECIFICATION**

Gauge connection	M = M10 x 1
Indication range	180 –360 bar
Nominal size	50 mm
Electrical Data:	
Contact pin and lug	gold –plated
Switch voltage	4,5 to 24 VDC/ VAC
Switch current	5 mA to 100 mA
Contact load	max 3W
Floating	
Switch type	contact above switch point
Switch point	nominal 180 bar
Setting	increasing pressure max 185 bar decreasing pressure min 160 bar



**www.rotarex.com**

CEODEUX Extinguisher Valves Technology S.A.  
24, Route de Diekirch, B.P. 19, L-7505 Lintgen (EUROPE)

ISO 9001  
CERTIFIED

Tel.: \*352-32 78 32-232  
Fax: \*352-32 78 32-326

