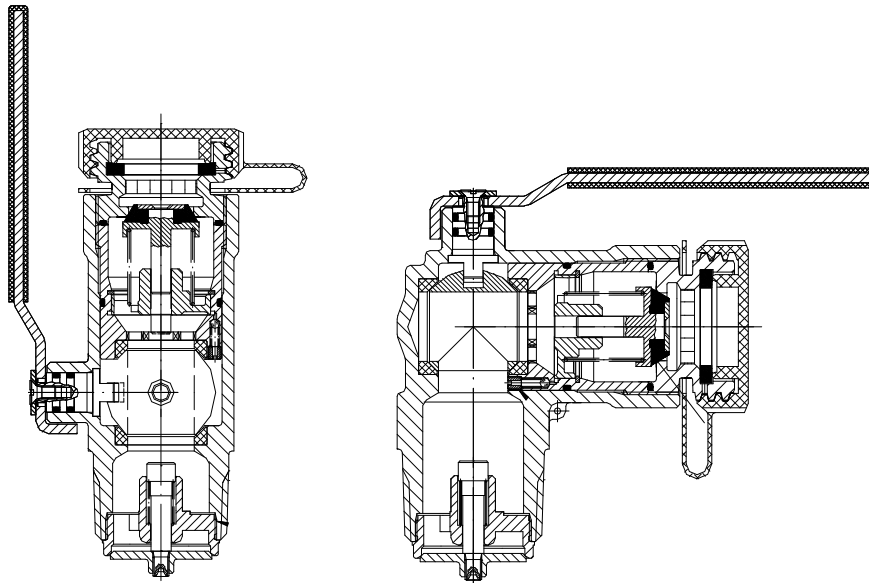


SRG

Schulz + Rackow Gastechnik GmbH

SRG LPG Manual Isolation Filler Valve Type 481-2



Technical Description

| Inlet Connection | Outlet Connection | Width across flats |
|------------------|-------------------|--------------------|
| ◆ 1 1/4" NPT | ◆ 1 3/4" ACME | ◆ 46 mm |

Product Description:

The SRG type 481 manual isolation filler valve is designed for fast filling of large static tanks and domestic storage tanks containing LPG.

Valves are fitted with a resilient seat disc as the main closure, supported by a metal to metal back check valve for added security. The addition of a manually operated ball valve between the two closures makes the system totally secure.

When the manual isolation valve is opened, both back checks are opened the flow of liquid and close automatically when the flow stops.

Suitable for design pressure up to 25 bar and temperatures from -20°C to +65°C.

As standard, valves are supplied with a screw cap made from tough moulded plastic which can withstand tank pressure. The cap has a lug with a through hole to facilitate the use of a tamper evident wire and lead seal.

Options:

A cap lock is available as an optional extra which will prevent the unauthorised removal of the cap and pirate filling.

Materials and Standards:

Valves are manufactured entirely from corrosion resistant materials including brass body and stainless steel springs.

Rubber type materials have been developed specifically for use with LPG and are manufactured strictly in compliance with **EN 549**.

Quality standards:

The SRG type 481 manual Isolation filler valve is manufactured in Germany to the highest quality standards and is in full compliance with TRB 801 no. 25, TRB 801 no. 45 and **EN 13175**. The SRG quality control system is accredited to **ISO 9001** and is continually assessed by the Notified Body.

Packaging:

All SRG valves are packed in robust cardboard boxes to help prevent damage in storage and transit and the ingress of foreign matter.

481 / 1358-001